
InternetGatewayDevice:1 Device Template Version 1.01

For UPnP™ Version 1.0

Status: Standardized DCP

Date: November 12, 2001

This Standardized DCP has been adopted as a Standardized DCP by the Steering Committee of the UPnP™ Forum, pursuant to Section 2.1(c)(ii) of the UPnP™ Forum Membership Agreement. UPnP™ Forum Members have rights and licenses defined by Section 3 of the UPnP™ Forum Membership Agreement to use and reproduce the Standardized DCP in UPnP™ Compliant Devices. All such use is subject to all of the provisions of the UPnP™ Forum Membership Agreement.

THE UPNP™ FORUM TAKES NO POSITION AS TO WHETHER ANY INTELLECTUAL PROPERTY RIGHTS EXIST IN THE STANDARDIZED DCPS. THE STANDARDIZED DCPS ARE PROVIDED "AS IS" AND "WITH ALL FAULTS". THE UPNP™ FORUM MAKES NO WARRANTIES, EXPRESS, IMPLIED, STATUTORY, OR OTHERWISE WITH RESPECT TO THE STANDARDIZED DCPS, INCLUDING BUT NOT LIMITED TO ALL IMPLIED WARRANTIES OF MERCHANTABILITY, NON-INFRINGEMENT AND FITNESS FOR A PARTICULAR PURPOSE, OF REASONABLE CARE OR WORKMANLIKE EFFORT, OR RESULTS OR OF LACK OF NEGLIGENCE.

© 1999-2001 Contributing Members of the UPnP™ Forum. All Rights Reserved.

Authors	Company
Prakash Iyer, Ulhas Warriar	Intel Corporation

Contents

1. OVERVIEW AND SCOPE.....	3
1.1. CHANGE LOG.....	3
1.2. REQUIREMENTS FOR AN INTERNET GATEWAY DEVICE.....	4
1.3. FOCUS AND GOALS FOR DCP VERSION 1.0.....	5
1.4. NON-GOALS FOR DCP VERSION 1.0.....	5
2. DEVICE DEFINITIONS.....	7
2.1. DEVICE TYPE.....	7
2.2. DEVICE MODEL.....	7
2.2.1. <i>Description of Device Requirements</i>	8
2.2.2. <i>Relationships Between Services</i>	8
2.3. THEORY OF OPERATION.....	9
3. XML DEVICE DESCRIPTION.....	10
4. TEST.....	14

List of Tables

Table 1: Device Requirements.....	7
-----------------------------------	---

1. Overview and Scope

This device template is compliant with the UPnP™ Architecture, Version *1.0*.

This document defines the REQUIRED **ROOT** device
urn:schemas-upnp-org:device:InternetGatewayDevice.

The *InternetGatewayDevice* encapsulates all sub-devices and services for the Internet Gateway Device Control Protocol (DCP).

The Internet Gateway is an “edge” interconnect device between a residential Local Area Network (LAN) and the Wide Area Network (WAN), providing connectivity to the Internet. The gateway MAY be physically implemented as a dedicated, standalone device or modeled as a set of UPnP devices and services on a PC. This version of the DCP does not cover small business networks. Discovery and access to these services from outside the home network is not recommended, unless adequate authentication, authorization and access control mechanisms are built into the device, beyond what is currently specified within the UPnP architecture framework.

Figure 1 below is a conceptual illustration of a generic Internet Gateway device consisting of one or more physical WAN and LAN interfaces.

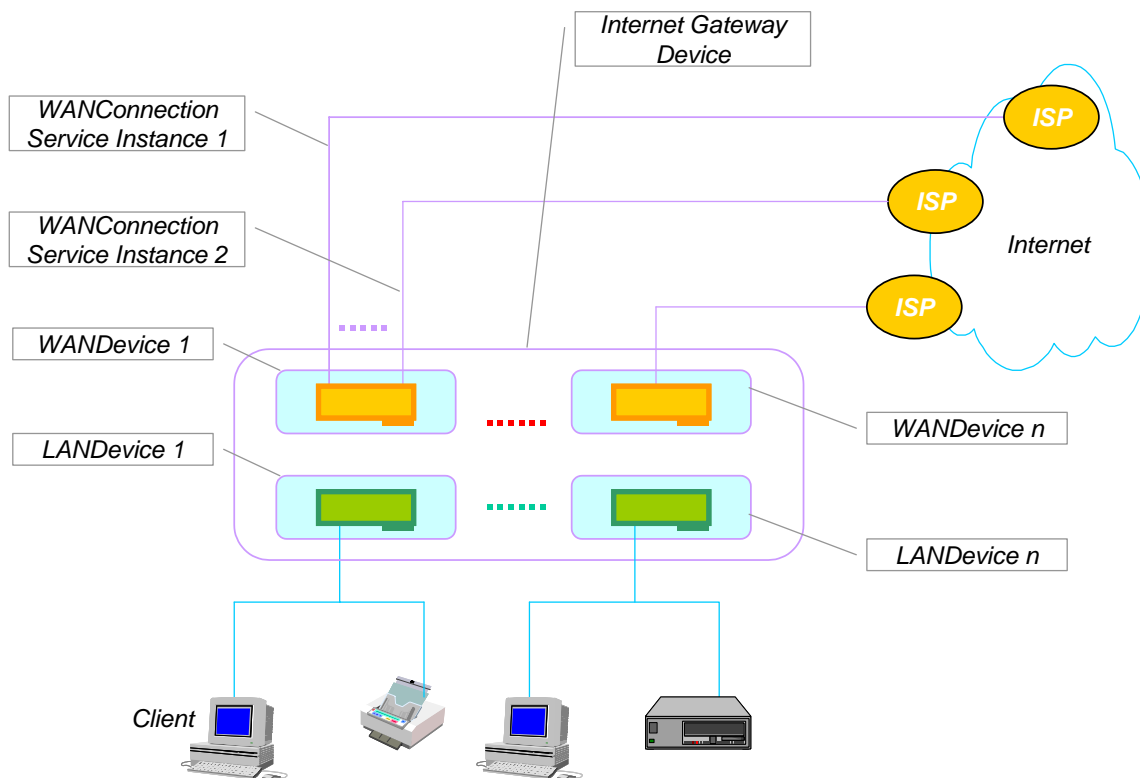


Figure 1: *InternetGatewayDevice* with LAN and WAN Interfaces

1.1. Change Log

Changes from *InternetGatewayDevice:0.1*

- Text changes to better describe devices and services hierarchy

- Compliance with v0.996 of the device template
- Changes from ***InternetGatewayDevice:0.2***
- Updated versions of service documents, ***WANDevice*** and services contained in ***WANDevice***
- Changes from ***InternetGatewayDevice:0.3***
- Updated text to reflect changes to the devices and services hierarchy.
- Changes from ***InternetGatewayDevice:0.4***
- Deleted white spaces from XML section.
- Changes from ***InternetGatewayDevice:0.41***
- Textual clarifications per F2F meeting on 11/30 and 12/1/00
 - Changed draft status to Template Design Complete (TDC)
- Changes from ***InternetGatewayDevice:0.42***
- Updated to device template v1.01
 - Verified against TDC checklist v1.01
 - Changed EthernetLinkConfig, POTSLinkConfig and CableLinkConfig services from Required to Optional
- Changes from ***InternetGatewayDevice:0.8***
- Added XML comment tags to comments text in XML template
- Changes from ***InternetGatewayDevice:0.81***
- Updated version numbers for contained devices and services
 - Changed definition of ServiceIDs for contained services
 - Changed LANDevice from Required to Optional
- Changes from ***InternetGatewayDevice:0.9***
- Changed ***WANDSLLinkConfig*** from required to optional in device requirements (Table 1) – due to lack of sufficient number of 3rd sample implementations.
- Changes from ***InternetGatewayDevice:0.99***
- Version updated to reflect 45-day review completion. No other changes to this draft.
- Changes from ***InternetGatewayDevice:0.991***
- Copyright messages and document status updated.

1.2. Requirements for an Internet Gateway Device

The following list of requirements has been identified on the capabilities of an Internet Gateway in coming up with the devices and services hierarchy for the gateway DCP.

- The ***InternetGatewayDevice*** MUST support 1 WAN interface, but MAY support more than one physical WAN interface to connect to the Internet.
- The ***InternetGatewayDevice*** MUST support 1 LAN interface, but MAY support more than one physical LAN interface to connect to the residential network.

An implementation MAY host the WAN interface and LAN interface (mentioned above) on the same physical network interface card (NIC).

- Each WAN interface MUST support one Internet connection, but MAY simultaneously support more than one Internet connection. Each of these connections will be modeled as instances of a service in the DCP.
- The ***InternetGatewayDevice*** must be IP addressable from the residential LAN at all times to be UPnP compliant. More specifically, in the case of gateways with broadband modems on the WAN side, the ***InternetGatewayDevice*** must be addressable
 - When the device is not configured for WAN access or does not have any WAN connectivity
 - Before, during and after modem and link configuration with a head-end device in the Internet service provider's central office.
- Connectivity on the WAN side MUST enable nodes on the residential LAN to access resources on the Internet. A gateway MAY support modems and/or connections on a modem to a service provider, not resulting in Internet connectivity – for example, POTS dial-up access to a modem bank of a home security monitoring service provider. Such connections are outside the scope and requirements of the gateway DCP.

In this document, an Internet connection implies IP connectivity to an Internet Service Provider. Figure 2 illustrates the hierarchy of devices and services in an ***InternetGatewayDevice***. A physical modem on the WAN side and a connection interface/port on the LAN side of the ***InternetGatewayDevice*** are modeled by a ***WANDevice*** and a ***LANDevice*** instance respectively. Depending on the hardware capabilities of an Internet Gateway, more than 1

instance of *WANDevice* and/or *LANDevice* are possible in an actual implementation of the gateway DCP description document. Virtual connection interfaces – such as Virtual Circuits (VC) on a DSL modem, are modeled by one or more instances of *WANConnectionDevice*. Sub-devices and services mentioned in this document are defined in companion documents that together specify the DCP for an Internet Gateway.

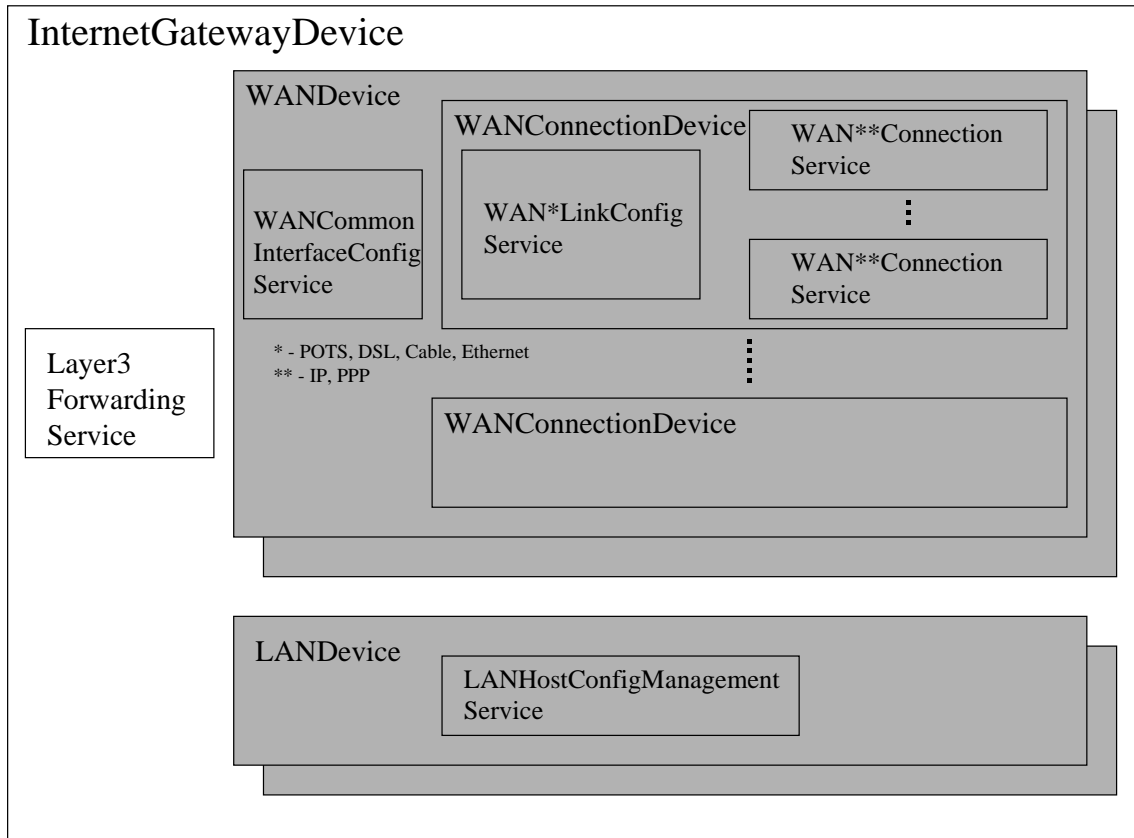


Figure 2: *InternetGatewayDevice* Devices and Services Hierarchy

1.3. Focus and Goals for DCP version 1.0

The Gateway Working Committee (IGD WC) agreed to focus on the following set of requirements in coming up with the hierarchy of devices and services for DCP v1.0.

- Sharing and configurable initiation of Internet data access among networked devices in the residential network.
- Richer end-user experience for UPnP enabled devices
 - Provide status and events on connections
 - Control of initiation and termination of connections
- Management of host configuration services
 - DHCP, Dynamic DNS (DDNS)
- Preserve ability of non-UPnP devices to initiate and/or share Internet access.

1.4. Non-Goals for DCP version 1.0

The following work items were discussed and considered to be beyond the scope of this version of the DCP.

- Configuration and connection management services for an ISDN modem
- Access control and user/device authentication services

- Advanced routing mechanisms across multiple, simultaneous, active connections on multiple WAN interfaces
- LAN interface physical layer services
- Fine-grained configuration and management of features specific to Ethernet bridging across multiple LAN segments / subnets and/or between LAN segments and WAN Internet connection(s).
- VPN services (outside-in or a VPN client initiating from the Internet Gateway)
- Services enabling bandwidth management on active Internet connections
- Exclusivity on initiation and sharing of active connections
- Modeling of firewall features
 - Too many technologies and component layers makes it hard to model
 - May be offered as vendor extensions
- Issues that come up in the context of multiple, simultaneously active Internet Gateway devices – for example, default gateway conflict resolution, load balancing and fail over
- Other non-connectivity related gateway functions
 - Multimedia translation and caching
 - Interfacing to “service” gateways

2. Device Definitions

2.1. Device Type

The following device type identifies a device that is compliant with this template:

urn:[schemas-upnp-org:device:InternetGatewayDevice:1](#)

2.2. Device Model

Products that expose devices of the type [urn:schemas-upnp-org:device:InternetGatewayDevice:1](#) must implement minimum version numbers of all required embedded devices and services specified in the table below.

Table 1: Device Requirements

DeviceType	Root	Req. or Opt. ¹	ServiceType	Req. or Opt. ¹	Service ID ²
			Layer3Forwarding:1	<i>O</i>	L3Forwarding1
			<i>Non-standard services embedded by an UPnP vendor go here.</i>	<i>X</i>	<i>TBD</i>
WANDevice:1		<i>R</i>	WANCommonInterfaceConfig:1	<i>R</i>	WANCommonIFCI
			<i>Non-standard services embedded by an UPnP vendor go here.</i>	<i>X</i>	<i>TBD</i>
WANConnectionDevice:1 <i>(an instance of WANDevice may include one or more WANConnectionDevice instances)</i>		<i>R</i>	WANPOTSLinkConfig:1	<i>O for POTS modems</i>	WANPOTSLinkCI
			WANDSLLinkConfig:1	<i>O for DSL modems</i>	WANDSLLinkCI
			WANCableLinkConfig:1	<i>O for Cable modems</i>	WANCableLinkCI
			WANEthernetLinkConfig:1	<i>O for Ethernet attached modems</i>	WANEthLinkCI
			WANPPPConnection:1	<i>R for modems that support PPP based connections</i>	<i>Multiple instances possible within a WANConnectionDevice. ServiceIDs for multiple instances will be WANPPPConn1, WANPPPConn2, WANPPPConn3 and so on.</i>
			WANIPConnection:1	<i>R for modems that support IP based</i>	<i>Only 1 instance per WANConnectionDevice is envisioned at</i>

				<u>connections</u>	<u>this time, although the design could support multiple instances in future. ServiceIDs for multiple instances will be WANIPConn1, WANIPConn2, WANIPConn3 and so on.</u>
			<i>Non-standard services embedded by an UPnP vendor go here.</i>	<i>X</i>	<i>TBD</i>
<u>LANDevice:1</u>		<u>O</u>	<u>LANHostConfigManagement:1</u>	<u>O</u>	<u>LANHostCfg1</u>
<i>Non-standard devices embedded by a UPnP vendor go here.</i>	<i>TBD</i>	<i>X</i>	<i>TBD</i>	<i>TBD</i>	<i>TBD</i>

¹ R = Required, O = Optional, X = Non-standard.

² Prefixed by urn:[upnp-org:serviceId](http://upnp-org.org/serviceId): .

2.2.1. Description of Device Requirements

As shown in the table above, the DCP defines 2 **Connection** services and 4 **LinkConfig** services to accommodate various types of WAN interfaces and connection types. The following table briefly describes the purpose of each of the services. An actual implementation of the DCP will instance only those **Connection** and **LinkConfig** services that are appropriate for the gateway device being modeled.

Service Name	Service Description
WANPPPConnection	PPP connections originating at the gateway or relayed or bridged through the gateway
WANIPConnection	IP connections originating or relayed or bridged through the gateway
WANPOTSLinkConfig	Configuration parameters associated with a WAN link on a Plain Old Telephone Service (POTS) modem
WANDSLLinkConfig	Configuration parameters associated with a WAN link on a Digital Subscriber Link (DSL) modem
WANCableLinkConfig	Configuration parameters associated with a WAN link on a cable modem
WANEthernetLinkConfig	Configuration parameters associated with an Ethernet- attached external modem (cable or DSL). If proprietary mechanisms are available to discover and configure an external modem, it is recommended that modem-specific LinkConfig services be modeled instead of this service.

2.2.2. Relationships Between Services

Layer3Forwarding identifies a default service, which is a specific instance of **WAN{PPP/IP}Connection** in a **WANConnectionDevice**. **WANCommonInterfaceConfig** defines variables and actions common across all instances of **WAN{PPP/IP}Connections** in a **WANDevice**. There may also be dependencies between a specific instance of **WAN*LinkConfig** and **WAN**Connection** service in a **WANConnectionDevice**.

2.3. Theory of Operation

Each **WANDevice** in Figure 1 can be viewed as an instantiation of a physical WAN interface. If an **InternetGatewayDevice** provides multiple WAN physical interfaces to UPnP clients, each of these will typically be included in the device description document as distinct **WANDevice** instances. However, an implementation may choose to encapsulate more than one physical WAN interface in a single **WANDevice**. This may be done, for example, in applications that use asymmetric connections like a satellite downlink and POTS uplink. Another example would be where multiple physical WAN interfaces are pooled and presented as one device. Aspects such as load balancing between the pooled resources would be transparent to UPnP clients in this case.

All Internet connections are set up from or through a WAN interface of the **InternetGatewayDevice** to Internet Service Providers (ISPs). **WANDevice** is a container for all UPnP services associated with a physical WAN device. It is assumed that clients are connected to **InternetGatewayDevice** via a LAN (IP-based network). Each link on a WAN interface is modeled by an instance of **WANConnectionDevice** in **WANDevice**. A **WANConnectionDevice** in turn contains one link-specific **WAN*LinkConfig**¹ service (where * can be POTS, DSL, Cable or Ethernet) and one or more instances of **WAN**Connection** service (where ** can be PPP or IP).

In accordance with UPnP Architecture version 1.0, the maximum number of **WAN**Connection** service instances is static and specified in the **InternetGatewayDevice** description document.

A **WANDevice** provides a **WANCommonInterfaceConfig** service that encapsulates Layer 1 and Layer 2 properties relevant to Internet access common to the specific WAN access type and across multiple **WAN**Connection** service instances.

The gateway device may also support multiple physical LAN interfaces. It may support distinct subnets of client nodes on the residential network. Each **LANDevice** – identified in the device description document with a UDN – typically corresponds to a physical LAN interface (or port) on the **InternetGatewayDevice**. However, an implementation may choose to encapsulate more than one physical LAN interface in a single **LANDevice**. This would be the case if two LAN subnets that are bridged are to be presented as a single logical LAN interface. Devices on a LAN may configure, initiate and/or share Internet connections.

The **InternetGatewayDevice** may also support Layer-3 packet transformation and forwarding functions managed and applicable across all connection instances. These functions are currently modeled in **Layer3Forwarding** service. Layer-3 packet forwarding functions that are specific to a connection will be modeled in each **WAN**Connection** service instance.

¹ The WC has not defined link configuration services for interfaces types other than those listed above. If needed, these can be implemented as vendor-proprietary extensions.

3. XML Device Description

```

<?xml version="1.0"?>
<root xmlns="urn:schemas-upnp-org:device-1-0">
  <specVersion>
    <major>1</major>
    <minor>0</minor>
  </specVersion>
  <URLBase>base URL for all relative URLs</URLBase>
  <device>
    <deviceType>urn:schemas-upnp-
org:device:InternetGatewayDevice:1</deviceType>
    <friendlyName>short user-friendly title</friendlyName>
    <manufacturer>manufacturer name</manufacturer>
    <manufacturerURL>URL to manufacturer site</manufacturerURL>
    <modelDescription>long user-friendly title</modelDescription>
    <modelName>model name</modelName>
    <modelName>model name</modelName>
    <modelNumber>model number</modelNumber>
    <modelURL>URL to model site</modelURL>
    <serialNumber>manufacturer's serial number</serialNumber>
    <UDN>uuid:UUID</UDN>
    <UPC>Universal Product Code</UPC>
    <iconList>
      <icon>
        <mimetype>image/format</mimetype>
        <width>horizontal pixels</width>
        <height>vertical pixels</height>
        <depth>color depth</depth>
        <url>URL to icon</url>
      </icon>
      <!-- XML to declare other icons, if any, go here -->
    </iconList>
    <serviceList>
      <service>
        <serviceType>urn:schemas-upnp-
org:service:Layer3Forwarding:1</serviceType>
        <serviceId>urn:upnp-org:serviceId:L3Forwarding1</serviceId>
        <SCPDURL>URL to service description</SCPDURL>
        <controlURL>URL for control</controlURL>
        <eventSubURL>URL for eventing</eventSubURL>
      </service>
      <!-- Declarations for other services added by UPnP vendor (if any)
go here -->
    </serviceList>
  </deviceList>
  <deviceList>
    <device>
      <deviceType>urn:schemas-upnp-org:device:WANDevice:1</deviceType>
      <friendlyName>short user-friendly title</friendlyName>
      <manufacturer>manufacturer name</manufacturer>
      <manufacturerURL>URL to manufacturer site</manufacturerURL>
      <modelDescription>long user-friendly title</modelDescription>
      <modelName>model name</modelName>
      <modelName>model name</modelName>
      <modelNumber>model number</modelNumber>
      <modelURL>URL to model site</modelURL>
      <serialNumber>manufacturer's serial number</serialNumber>

```

```

<UDN>uuid:UUID</UDN>
<UPC>Universal Product Code</UPC>
<iconList>
  <icon>
    <mimetype>image/format</mimetype>
    <width>horizontal pixels</width>
    <height>vertical pixels</height>
    <depth>color depth</depth>
    <url>URL to icon</url>
  </icon>
  XML to declare other icons, if any, go here
</iconList>
<serviceList>
  <service>
    <serviceType>urn:schemas-upnp-
org:service:WANCommonInterfaceConfig:1</serviceType>
    <serviceId>urn:upnp-org:serviceId:WANCommonIFC1</serviceId>
    <SCPDURL>URL to service description</SCPDURL>
    <controlURL>URL for control</controlURL>
    <eventSubURL>URL for eventing</eventSubURL>
  </service>
  <!-- Declarations for other services added by UPnP vendor (if any)
go here -->
</serviceList>
<deviceList>
  <device>
    <deviceType>urn:schemas-upnp-
org:device:WANConnectionDevice:1</deviceType>
    <friendlyName>short user-friendly title</friendlyName>
    <manufacturer>manufacturer name</manufacturer>
    <manufacturerURL>URL to manufacturer site</manufacturerURL>
    <modelDescription>long user-friendly title</modelDescription>
    <modelName>model name</modelName>
    <modelName>model name</modelName>
    <modelNumber>model number</modelNumber>
    <modelURL>URL to model site</modelURL>
    <serialNumber>manufacturer's serial number</serialNumber>
    <UDN>uuid:UUID</UDN>
    <UPC>Universal Product Code</UPC>
    <iconList>
      <icon>
        <mimetype>image/format</mimetype>
        <width>horizontal pixels</width>
        <height>vertical pixels</height>
        <depth>color depth</depth>
        <url>URL to icon</url>
      </icon>
      XML to declare other icons, if any, go here
    </iconList>
    <serviceList>
      <service>
        <serviceType>urn:schemas-upnp-
org:service:WANPOTSLinkConfig:1</serviceType>

```

² NOTE to implementers: This template is representative of one device type – a POTS modem in this case. Depending on the type of modem, substitute or add device specific service names.

```

        <serviceId>urn:upnp-org:serviceId:WANPOTSLinkC1</serviceId>
        <SCPDURL>URL to service description</SCPDURL>
        <controlURL>URL for control</controlURL>
        <eventSubURL>URL for eventing</eventSubURL>
    </service>
    <service>
        <serviceType>urn:schemas-upnp-
org:service:WANPPPConnecti on3: 1</serviceType>
        <serviceId>urn:upnp-org:serviceId:WANPPPConn1</serviceId>
        <SCPDURL>URL to service description</SCPDURL>
        <controlURL>URL for control</controlURL>
        <eventSubURL>URL for eventing</eventSubURL>
    </service>
    <!-- Description of embedded devices added by UPnP vendor (if
any) go here -->
    </serviceList>
    <deviceList> </deviceList>
    <presentationURL>URL for presentation</presentationURL>
</device>
    <presentationURL>URL for presentation</presentationURL>
</deviceList>
</device>
<device>
    <deviceType>urn:schemas-upnp-org:device:LANDevice: 1</deviceType>
    <friendlyName>short user-friendly title</friendlyName>
    <manufacturer>manufacturer name</manufacturer>
    <manufacturerURL>URL to manufacturer site</manufacturerURL>
    <modelDescription>long user-friendly title</modelDescription>
    <modelName>model name</modelName>
    <modelName>model number</modelName>
    <modelURL>URL to model site</modelURL>
    <serialNumber>manufacturer's serial number</serialNumber>
    <UDN>uuid:UUID</UDN>
    <UPC>Universal Product Code</UPC>
    <iconList>
        <icon>
            <mimetype>image/format</mimetype>
            <width>horizontal pixels</width>
            <height>vertical pixels</height>
            <depth>color depth</depth>
            <url>URL to icon</url>
        </icon>
        <!-- XML to declare other icons, if any, go here -->
    </iconList>
    <serviceList>
        <service>
            <serviceType>urn:schemas-upnp-
org:service:LANHostConf i gManagement: 1</serviceType>
            <serviceId>urn:upnp-org:serviceId:LANHostCf g1</serviceId>
            <SCPDURL>URL to service description</SCPDURL>
            <controlURL>URL for control</controlURL>
            <eventSubURL>URL for eventing</eventSubURL>

```

³ NOTE to implementers: This template is representative of one connection type – dial-up PPP in this case. Depending on the type of connection, substitute or add device specific service names.

```
        </service>
        <!-- Declarations for other services added by UPnP vendor (if any)
go here -->
    </serviceList>
    <deviceList>
        <!-- Description of embedded devices added by UPnP vendor (if any)
go here -->
        </deviceList>
        <presentationURL>URL for presentation</presentationURL>
    </device>
    <!-- Description of embedded devices added by UPnP vendor (if any) go
here -->
    </deviceList>
    <presentationURL>URL for presentation</presentationURL>
    </device>
</root>
```

4. Test

No semantic tests are defined for this device.

Change History**Change Log for Version 1.0 (10-4-00)**

- Revised the Title Page to call out V1.0 of the Device Template
- Changed to be consistent with Sample Designs released to the Technical Committee
- Deleted the DeviceList from the title page.
- Updated Table 1 to shade boxes that do not require entry.